

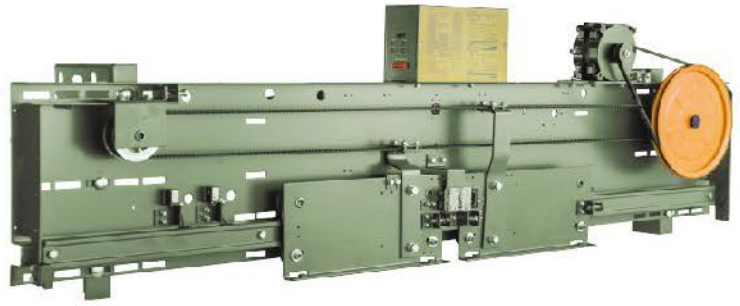
中分式门机装置

Split type door machine device

XD1406C

对应 HB1202 中分式层门装置

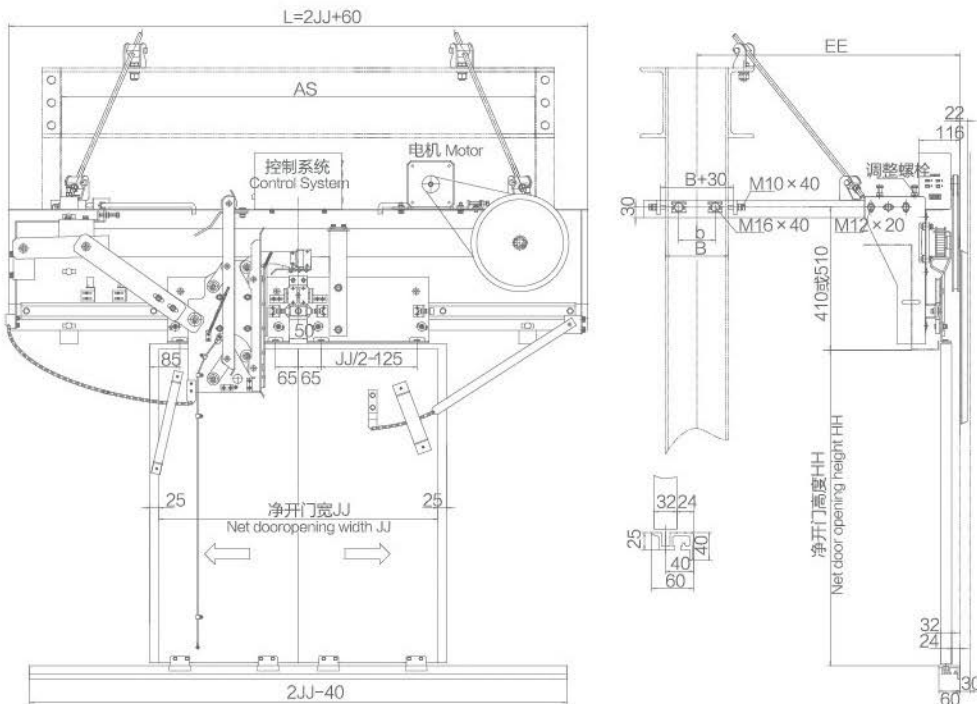
Corresponding to HB1202 center opening landing door device



产品特点 Product Characteristics

交流变频控制	AC variable frequency control
变频采用专用接口与电梯系统连接	Special interface is connected with elevator system for variable frequency
变频方式工作电压AC 220V	Operating voltage in variable frequency mode: AC 220V
异步门刀，同步带传动	Asynchronous door vane, synchronous belt drive
轿顶或直梁安装方式可选	The car top and straight beam installations are optional
轿门锁功能	Car door lock function

外形和安装尺寸 Overall dimensions and mounting dimensions



净开门宽 JJ Net door opening width JJ	700	800	900	1000	1100	1200
L	1460	1660	1860	2060	2260	2460