

双折式门机装置

Two-speed door operator

XD1407B

对应 XD1207B 双折式层门装置

Corresponding to XD1207B two-speed landing door device



产品特点 Product Characteristics

交流变频调压控制

AC variable frequency and voltage regulation control

变频采用专用接口与电梯系统连接

Special interface is connected with elevator system for variable frequency control

变频方式工作电压AC 220V

Operating voltage in variable frequency mode: AC 220V

轿门锁功能

Car door lock function

直接安装在轿厢直梁上，可选轿顶安装

Directly mounted on straight beam of car, installation is optional

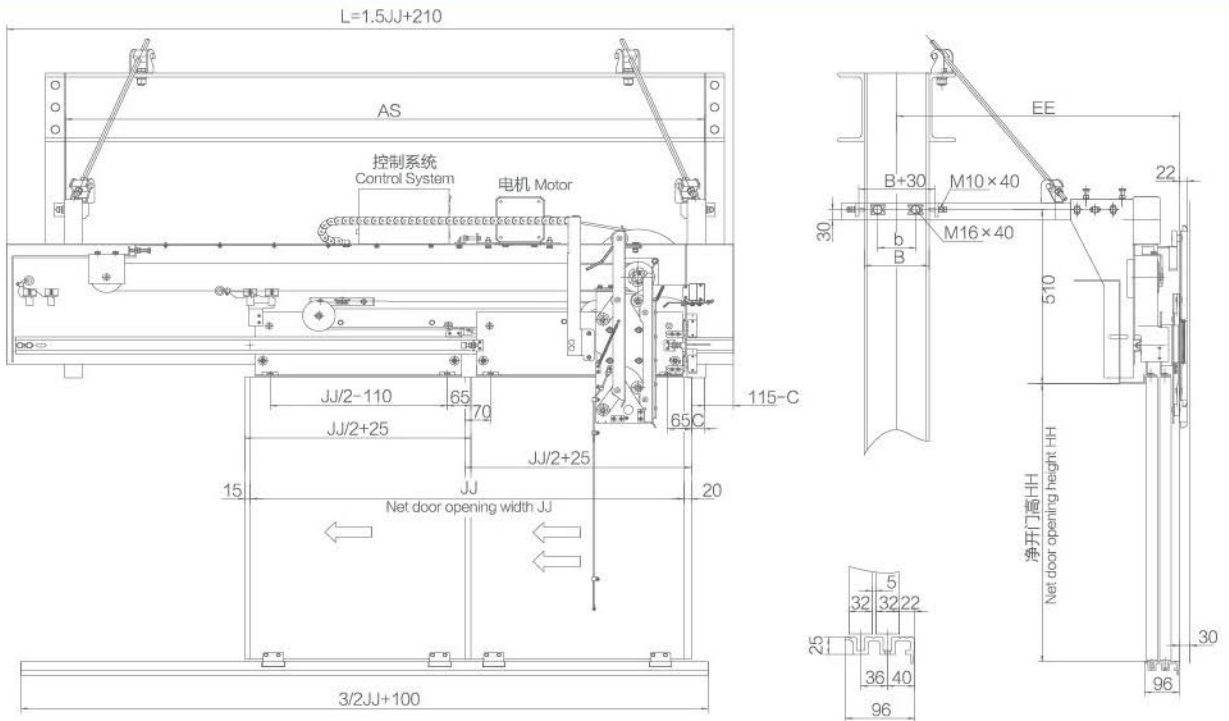
图示为左开门，右开门对称制作

The figure indicates left opening, and the right opening is manufactured symmetrically

“C”为直梁内侧与快门边线的距离

“C” is the distance between the inside of straight beam and fast door borderline

外形和安装尺寸 Overall dimensions and mounting dimensions



净开门宽 JJ Net door opening width JJ	700	800	900	1000	1100	1200	1300	1400	1500	1600	1700	1800
L	1260	1410	1560	1710	1860	2010	2160	2310	2460	2610	2760	2910