

有齿曳引机

Geard traction machine

YJ160

产品特点 Product Characteristics

曳引比: 1:1、2:1

额定载重: 630、800、1000kg

额定梯速: 0.63、1.0、1.6m/s

最大提升高度: 50m

噪音级别: <62dB (A)

扭转振动: <2.0mm/s

水平和垂直振动: <0.8mm/s

制动器电压: 制动电压DC110V, 保持电压DC110V或DC55V

置式: 右置或左置 (此图为右置)

Traction ratio: 1:1、2:1

Rated capacity: 630、800、1000kg

Rated elevator speed: 0.63、1.0、1.6m/s

Max. lifting height: 50m

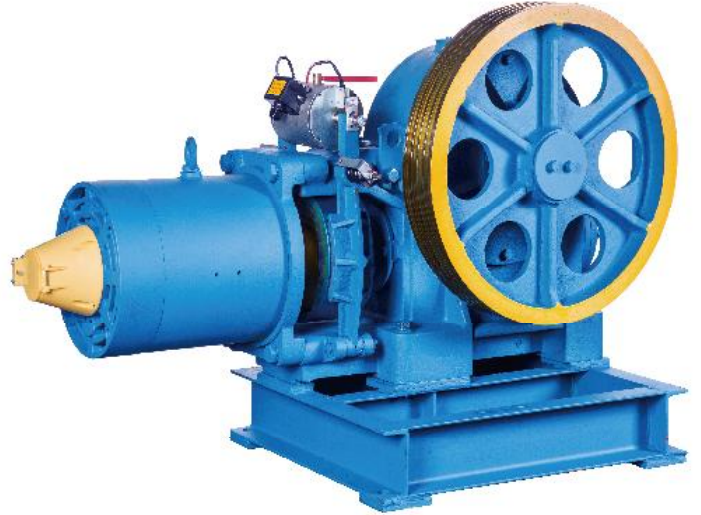
Noise level: < 62dB(A)

Torsional vibration: < 2.0mm/s

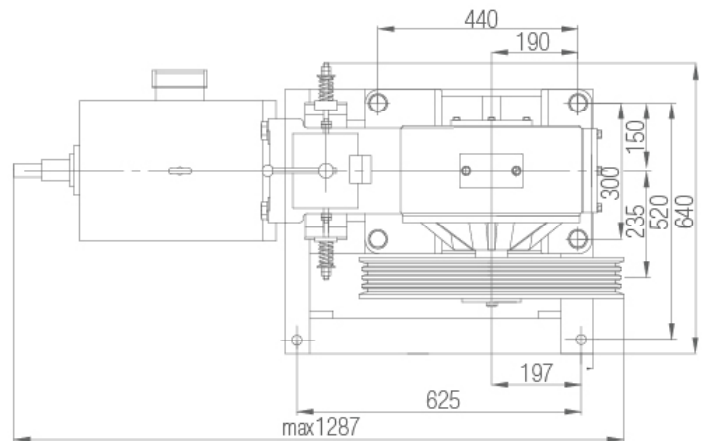
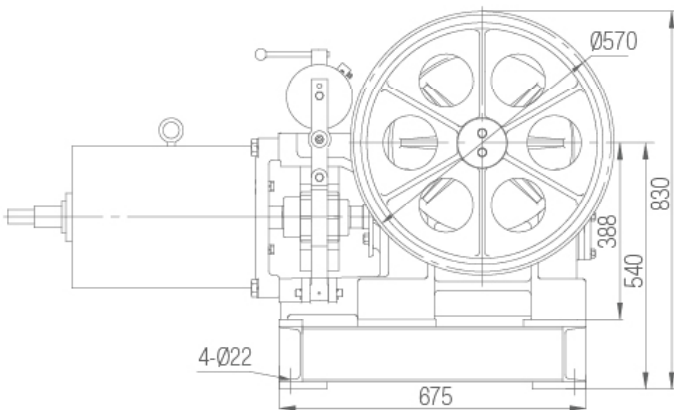
Horizontal and vertical vibrations: < 0.8mm/s

Brake voltage: DC110V for brake opening,
and DC110V or DC 55V for brake holding

Arrangement: left side or right side (The picture is for right side)



外形和安装尺寸 Overall dimensions and mounting dimensions



| 型号 Type | 规格 Specification | 曳引比 Traction Ratio | 额定梯速 Rated Speed (m/s) | 额定载重 Rated Load (kg) | 静态载重 Static Capacity (kg) | 速比 Reduction Ratio | 曳引轮规格 Specification of Traction Sheave | 槽距 Groove Spacing (mm) | 电机型号 Type of Motor | 功率 Power (kw) | 电机转速 Motor Speed (r/min) | 电源 Power Source (V/Hz) | 电流 Current (A) | 自重 Weight (kg) | 推荐提升高度 Recommended lifting height (m) |
|------------|---------------------|-----------------------|---------------------------|-------------------------|------------------------------|-----------------------|---|---------------------------|-----------------------|------------------|-----------------------------|---------------------------|-------------------|-------------------|--|
| YJ160 | A-I | 1:1 | 0.63 | 800 | 3700 | 1:43 | Ø570-4-13 | 19 | YPTD160M2-6 | 7.5 | 967 | 380/50 | 15.8 | 490 | 30 |
| | A-II | 1:1 | 1.00 | 800 | | 1:43 | Ø570-4-13 | 19 | YPTD160M1-4 | 9.0 | 1456 | 340/50 | 20.8 | | 50 |
| | B-1 | 1:1 | 1.60 | 630 | | 2:55 | Ø570-4-13 | 19 | YPTD160M1-4 | 9.0 | 1456 | 340/50 | 20.8 | | 50 |
| | C-1 | 2:1 | 1.00 | 1000 | | 2:43 | Ø570-6-11 | 15 | YPTD160M2-4 | 11 | 1456 | 380/50 | 22.5 | | 50 |
| | B | 1:1 | 1.60 | 800 | | 2:55 | Ø570-4-13 | 19 | YPTD160M1-4 | 11 | 1456 | 380/50 | 22.5 | | 50 |