

# 有齿曳引机

Geard traction machine

## YJ200A

### 产品特点 Product Characteristics

曳引比: 1:1、2:1

额定载重: 1000、1150、1600、2300kg

额定梯速: 0.5、1.0m/s

最大提升高度: 60m

噪音级别: <64dB (A)

扭转振动: <3.0mm/s

水平和垂直振动: <0.8mm/s

制动器电压: 制动电压DC110V, 保持电压DC110V

置式: 左置或右置 (此图为右置)



Traction ratio: 1:1、2:1

Rated capacity: 1000、1150、1600、2300kg

Rated elevator speed: 0.5、1.0m/s

Max. lifting height: 60m

Noise level: <64dB(A)

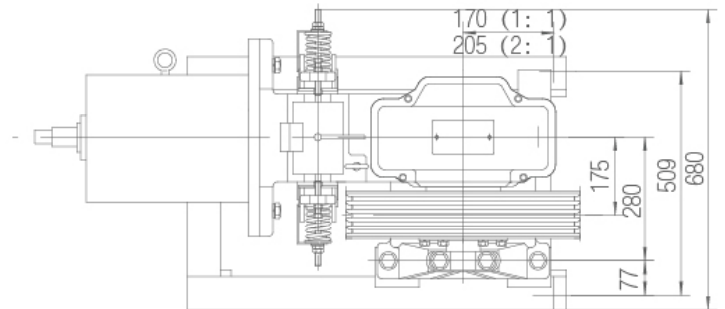
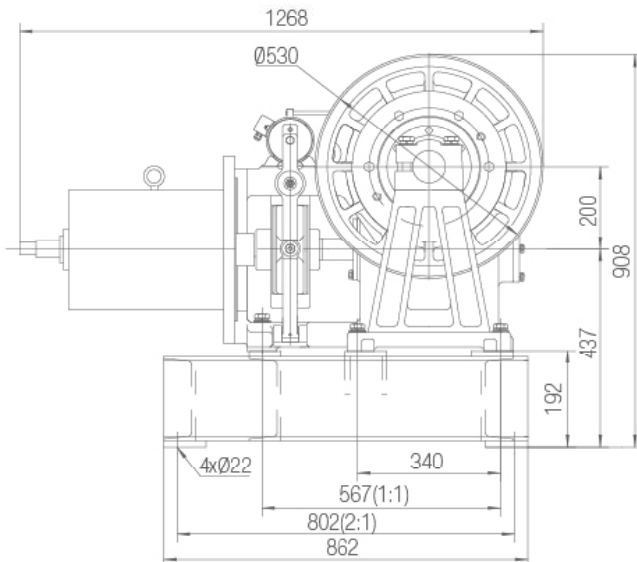
Torsional vibration: <3.0mm/s

Horizontal and vertical vibrations: <0.8mm/s

Brake voltage: DC110V for brake opening, and DC110V for brake holding

Arrangement: left side or right side (The picture is for right side)

### 外形和安装尺寸 Overall dimensions and mounting dimensions



型号 Type	规格 Specification	曳引比 Traction Ratio	额定梯速 Rated Speed [m/s]	额定载重 Rated Load [kg]	静态载重 Static Capacity [kg]	速比 Reduction Ratio	曳引轮规格 Specification of Traction Sheave	槽距 Groove Spacing [mm]	电机型号 Type of Motor	功率 Power [kw]	电机转速 Motor Speed [r/min]	电源 Power Source [V/Hz]	电流 Current [A]	自重 Weight [kg]	推荐提升高度 Recommended Lifting height [m]
YJ200A	IV	1:1	0.50	1000	5000	1:55	Ø530-5-13	19	YPTD160M2-6	7.5	967	380/50	15.8	513	60
	V	2:1	0.50	1000		2:55			YPTD160M2-6	7.5			15.8		
	VI	1:1	1.00	1150		2:55			YPTD160L1-6	11			22.9		
	II	2:1	0.50	1600		2:55			YPTD160M2-6	7.5			15.8		
	X	2:1	0.50	2300		2:55			YPTD160L1-6	11			22.9		